



Crabtree, Rohrbaugh & Associates - Architects

401 East Winding Hill Road
 Mechanicsburg, PA 17055
 Maryland • Pennsylvania • Virginia • West Virginia

Contractor: McCarty & Son, Inc.
Address: 1161 Steinmetz Road
Address:
City, State, ZIP: Ephrata, PA 17522

Project : Northern Lebanon SD
Address: New Elementary School

Change Order No: 3

Date: 1/25/2022

Architect's Project No: 3446

The contract is changed as follows:

Contract Type: Electrical

Notice to Proceed Date: 8/31/2021

Add	\$1,742.15
Deduct	

Add \$1,742.15 To provide and install a 35', class 4 utility pole for telephone service entrance as per RFI EC-08. See the attached McCarty COR dated January 13, 2022.

Additional Documentation Attached

This Change Order is not valid until signed by the Owner, Architect, and Contractor.

Original Contract Amount	\$ 6,635,472.00
Net Change by previous Change Orders	\$ (110,689.35)
Contract Amount prior to this Change Order	\$ 6,524,782.65
Net Change by this Change Order	\$ 1,742.15
Contract Amount after this Change Order	\$ 6,526,524.80

Contract Time adjustment as a result of this Change Order 0 Days
 Date of Substantial Completion as of this Change Order

Architect
 Crabtree Rohrbaugh & Assoc.
 401 East Winding Hill Road
 Third Floor
 Mechanicsburg, PA 17055

Contractor
 McCarty & Son, Inc.
 1161 Steinmetz Road
 Ephrata, PA 17522

Owner
 Northern Lebanon School I
 345 School Drive
 Fredericksburg, PA 17026

By: _____

By: _____

By: _____

Date: _____

Date: _____

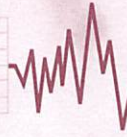
Date: _____

PROPOSAL



McCARTY & SON INC.

"Quality and Pride in Workmanship"



ELECTRICAL CONTRACTORS
Commercial & Industrial

1161 Steinmetz Road
Ephrata, PA 17522

(717) 626-9580
(717) 721-7680
Email: bmccarty@dejazzd.com

No. 8302

PROPOSAL SUBMITTED TO Northern Lebanon School District	PHONE	DATE January 13, 2022
STREET 345 School Drive	PROJECT NAME Utility Pole for Telephone	
CITY, STATE and ZIP CODE Fredericksburg, PA 17026	PROJECT LOCATION Northern Lebanon Elementary School	
ARCHITECT	ATTENTION Attn: Bradly Reist	

We hereby submit specifications and estimates for:

Price quotation to provide and install a 35', class 4 utility pole for telephone service entrance.

See attached breakdown. Reference RFI #8 response

Price Quotation: 1,742.15

Thank you for giving us the opportunity to supply you with a quote for this work.

We Propose hereby to furnish material and labor – complete in accordance with above specifications, for the sum of:

One Thousand, Seven Hundred, Forty-Two and 15/100 dollars (\$ 1,742.15).

Payment to be made as follows:

All material is guaranteed to be as specified. All work to be completed in a workmanlike manner according to standard practices. Any alteration or deviation from above specifications involving extra costs will be executed only upon written orders, and will become an extra charge over and above the estimate. All agreements contingent upon strikes, accidents or delays beyond our control. Owner to carry fire, tornado and other necessary insurance. Our workers are fully covered by Workman's Compensation Insurance.

Acceptance of Proposal – The above prices, specifications and conditions are satisfactory and are hereby accepted. You are authorized to do the work as specified. Payment will be made as outlined above.

Date of Acceptance: _____

Authorized Signature _____

Kyle H. McCarty

Note: This proposal may be withdrawn by us if not accepted within 15 days.

JWSM

Signature _____



"Quality and Pride in Workmanship"

Electrical Contractors

Commercial & Industrial

1161 Steinmetz Road
Ephrata, PA 17522

(717) 626-9580

(717) 721-7680

bmccarty@dejazzd.com

January 13, 2022

Northern Lebanon School District
345 School Drive
Fredericksburg, PA 17026

RE: New Northern Lebanon Elementary School
Proposal 8302 Breakdown

To Whom It May Concern;

Below is a price quotation breakdown to provide and install a 35' class 4 utility pole for telephone service entrance:

- New Construction
- Renovations
- Fire Alarm System Installation
- Security System Installation
- Sound System Installation
- Data Networking
- Fiber Optics
- Power Distribution
- Control Wiring
- Phone and Cable Wiring
- Outdoor Lighting
- Distribution 13KV
- Bucket Truck Service
- Design - Build
- Plant Maintenance

Material:

1 Class 4 35' utility pole

Material:	379.48
Overhead & Profit:	56.93
Labor (4.5 hrs):	369.99
Equipment Labor (6.5 hrs):	826.93
Fuel:	65.00
Bid Bond:	43.82

Total Amount: 1,742.15

If you have any questions, please feel free to give our office a call.

Sincerely,

Kyle H. McCarty
 Kyle H. McCarty *hsm*

McCarty & Son, Inc.

**Job Name: Northern Lebanon Elementary School
REQUEST FOR INFORMATION**

RFI #: EC-008

DATE:	<u>November 23, 2021</u>	DATE NEEDED:	<u>asap</u>
TO:	<u>Scott Cousins</u>	REPRESENTING:	<u>CRA</u>
FROM:	<u>Kyle H McCarty</u>	REPRESENTING:	<u>McCarty & Son, Inc.</u>

SUBJECT: <u>telephone utility company</u>	Contract Drawing Ref: _____
	Shop Drawing Ref: _____
	Specification: _____

QUESTION:

Due to the inability to coordinate with the telephone utility company for new service
entrance pole, would it be acceptable to turn the contracted conduits up out of ground
at that location?

Please advise.

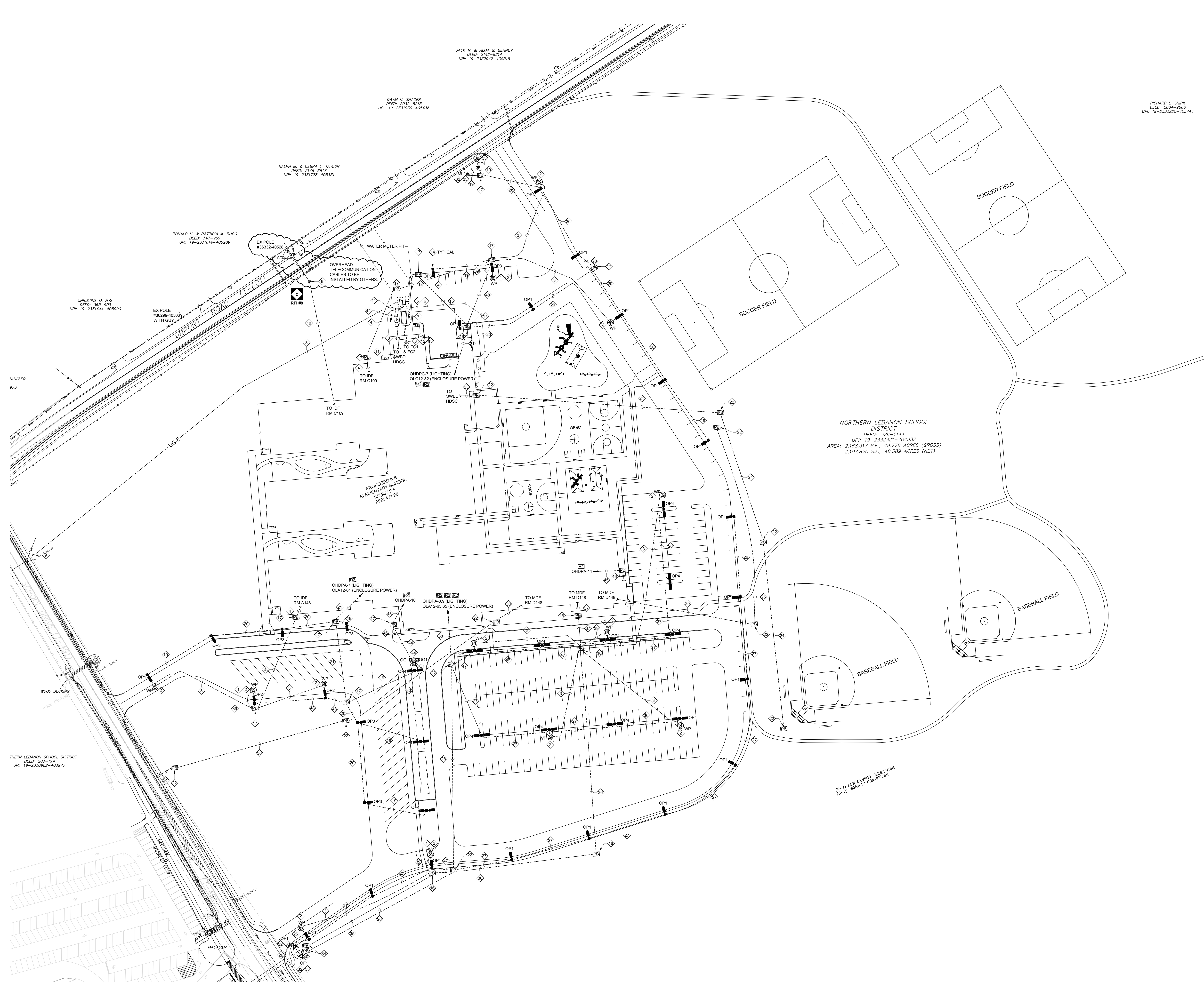
Thank you

RESPONSE:

Revised RFI- EC-008 per project meeting 12/21/21 correspondence.

Please refer to the attached revised electrical site plan with added utility pole
and the telecommunications duct bank at its original contract location.

Please call if there are any questions. Dave Finnegan- MEC- 12/29/2021



GENERAL NOTES:

1. PROVIDE PULL STRINGS IN ALL UNUSED SPARE CONDUITS.
2. COORDINATE EXCAVATIONS WITH ALL TRADES.
3. WATERPROOF AND PATCH ALL PENETRATIONS INTO VAULTS AND HANDHOLES.
4. PATCH AND RESTORE SITE TO MATCH EXISTING CONDITIONS WHERE EXCAVATION DISTURBS EXISTING TO REMAIN SURFACES.
5. COORDINATE HANDHOLE LOCATIONS WITH ARCHITECT, OWNER, NEW WORK PLANS AND EXISTING CONDITIONS.

DRAWING NOTES:

1. EXTEND CONDUIT UP IN POLE BASE WITH COPPER/FIBER INDICATED. PROVIDE EQUIPMENT ENCLOSURE WITH EQUIPMENT SPECIFIED AND MOUNT AT 8' AFS. PROVIDE INDOOR/OUTDOOR RATED CATEGORY 6A CABLE FROM CAMERA TO EQUIPMENT ENCLOSURE.
2. EXTEND CONDUIT WITH CATEGORY 6A CABLE INSIDE POLE BASE AND LIGHT POLE TO POLE MOUNTED CAMERA. INSTALL OWNERS FURNISHED POLE ARM MOUNTING BRACKET AND CAMERA AS REQUIRED BY OWNER.
3. INDOOR/OUTDOOR RATED CATEGORY 6A CABLE IN 1" CONDUIT PER DETAIL 1E10.1. PROVIDE CONNECTORS ON EACH END TO CONNECT TO SWITCH AND CAMERA.
4. OUTDOOR RATED 6 STRAND OS2 FIBER CABLE IN 2" CONDUIT TO MDF/IDF PER DETAIL 1E10.1.
5. PROVIDE TRANSFORMER VAULT FOR UTILITY TRANSFORMER.
6. PROVIDE BOLLARDS AS REQUIRED BY THE UTILITY COMPANY.
7. GENERATOR WITH PAD PER DETAIL 8E10.1. PROVIDE PROTECTIVE BOLLARDS PER DETAILS 9E10.1 AND 10E10.1.
8. REFER TO POWER RISER DIAGRAM FOR CONDUCTORS AND CONDUITS.
9. PROVIDE 35' PRESSURE TREATED SOUTHERN YELLOW PINE UTILITY POLE FOR OVERHEAD UTILITY COMMUNICATIONS CABLES. COORDINATE LOCATION WITH UTILITIES, SITE PLANS, AND CIVIL ENGINEERS REQUIREMENTS.
10. (3) 4" CONDUITS FOR LOW VOLTAGE SERVICES PER DETAIL 5E10.1. PROVIDE (2) 4" CONDUITS WITH (3) 1-1/4" INNERDUCT RACEWAYS WITH DIFFERENT CONTINUOUS COLORS.
11. GROUNDING COUNTERPOISE. COORDINATE EXACT LOCATION WITH THE NEW WORK PLANS.
12. 6#10 + 1#10 GND IN 2" CONDUIT PER DETAIL 1E10.1.
13. (2) 1" CONDUITS PER DETAIL 2E10.1 TO ROOM A101 FOR REMOTE ANNUNCIATOR AND MONITORING.
14. PROVIDE POLE BASE PER DETAIL 7E10.1.
15. 1" CONDUIT PER DETAIL 1E10.1.
16. 24" x 36" x 24" DEEP HANDHOLE.
17. 13" x 24" x 24" DEEP HANDHOLE.
18. 3 FIRE ALARM TAMPER SWITCHES IN WATER METER PIT WITH CABLING IN 1-1/2" CONDUIT PER DETAIL 1E10.1 TO FIRE ALARM PANEL IN ROOM C141.
19. 2#6 + 1#6 GND IN 1" CONDUIT PER DETAIL 1E10.1.
20. 4#6 + 1#6 GND IN 1" CONDUIT PER DETAIL 1E10.1.
21. 4#6 (LIGHTING) + 2#6 (ENCLOSURE POWER) + 1#6 GND IN 1-1/2" CONDUIT + SPARE 2" CONDUIT PER DETAIL 2E10.1.
22. 36" x 36" x 24" DEEP HANDHOLE.
23. (2) 4" CONDUITS STUBBED UP IN SWITCHBOARD HDSC FOR FUTURE.
24. (2) 4" CONDUITS PER DETAIL 5E10.1.
25. 4" CONDUIT WITH (3) 1-1/4" INNERDUCT RACEWAYS WITH DIFFERENT CONTINUOUS COLORS FOR LOW VOLTAGE SERVICES PER DETAIL 1E10.1.
26. 2#6 + 1#6 GND IN 1" CONDUIT PER DETAIL 1E10.1.
27. 4#6 + 1#6 GND IN 1-1/4" CONDUIT PER DETAIL 1E10.1.
28. 4#3 (LIGHTING) + 2#4 (ENCLOSURE POWER) + 2#6 (SIGN) + 1#3 GND IN 2-1/2" CONDUIT + SPARE 2-1/2" CONDUIT PER DETAIL 2E10.1.
29. (2) 4" CONDUITS FOR LOW VOLTAGE SERVICES PER DETAIL 5E10.1. PROVIDE (1) 4" CONDUIT WITH (3) 1-1/4" INNERDUCT RACEWAYS WITH DIFFERENT CONTINUOUS COLORS.
30. (2) 4" CONDUITS FOR LOW VOLTAGE SERVICES PER DETAIL 5E10.1. PROVIDE (1) 4" CONDUIT WITH (3) 1-1/4" INNERDUCT RACEWAYS WITH DIFFERENT CONTINUOUS COLORS. FIBER PER TELECOMMUNICATIONS RISER SHALL BE INSTALLED IN A INNERDUCT.
31. BORE (2) 4" CONDUITS UNDER EXISTING ROAD. PROVIDE (1) 4" CONDUIT WITH (3) 1-1/4" INNERDUCT RACEWAYS WITH DIFFERENT CONTINUOUS COLORS. FIBER PER TELECOMMUNICATIONS RISER SHALL BE INSTALLED IN A INNERDUCT.
32. PROVIDE FLOODLIGHT BASE PER DETAIL 11E10.1.
33. COORDINATE EXACT FLOODLIGHT LOCATION WITH SIGN.
34. (2) 13" x 24" x 24" DEEP HANDHOLES (POWER AND LOW VOLTAGE). PROVIDE FINAL CONNECTIONS TO SIGN.
35. OUTDOOR RATED 6 STRAND OS2 FIBER CABLE AS REQUIRED BY SIGN MANUFACTURE IN 2" CONDUIT PER DETAIL 1E10.1.
36. (2) OUTDOOR RATED 6 STRAND OS2 FIBER CABLES IN 2" CONDUIT TO MDF/IDF PER DETAIL 1E10.1.
37. (3) OUTDOOR RATED 6 STRAND OS2 FIBER CABLES IN 2" CONDUIT TO MDF/IDF PER DETAIL 1E10.1.
38. 4#6 (LIGHTING) + 2#6 (ENCLOSURE POWER) + 4#3 (LIGHTING) + 2#4 (ENCLOSURE POWER) + 2#6 (SIGN) + 1#3 GND IN 2-1/2" CONDUIT + SPARE 2-1/2" CONDUIT PER DETAIL 2E10.1.
39. PROVIDE CONDUIT WITH COPPER/FIBER INDICATED FROM HANDHOLE THROUGH LIGHT POLE BASE AND LIGHT POLE TO EQUIPMENT ENCLOSURE. SIZE CONDUIT AS NEEDED FOR COPPER/FIBER INSTALLATIONS WITH SPARE CAPACITY FOR FUTURE CABLES.
40. PROVIDE SEALED SINGLE PHASE 3KVA 480V TO 120/240V WITH 480V PRIMARY NEMA 3R - 30A - 2 POLE FUSED DISCONNECT SWITCH AND 120/240V SECONDARY NEMA 3R - 30A - 2 POLE FUSED DISCONNECT SWITCH. PROVIDE CORROSION RESISTANT MOUNTING STRUCTURE TO SUPPORT ALL EQUIPMENT AND ALL ASSOCIATED WIRING BETWEEN HANDHOLE AND SIGN. COORDINATE LOCATION WITH ARCHITECT AND SIGN REQUIREMENTS.
41. GRINDER PUMP SYSTEM WITH PUMP DISCONNECTS. PROVIDE WIRING/CONDUIT FROM CONTROL PANEL TO PUMPS AS REQUIRED BY MANUFACTURER.
42. 6#10 + 1#10 GND IN 1-1/4" CONDUIT + SPARE 1" CONDUIT PER DETAIL 2E10.1. CONNECT TO CIRCUITS OHDP-9 & 10.
43. 4#10 + 1#10 GND IN 1" CONDUIT + SPARE 1" CONDUIT PER DETAIL 2E10.1.
44. 2#10 + 1#10 GND IN 1" CONDUIT PER DETAIL 1E10.1.
45. 2#6 + 1#6 GND IN 1" CONDUIT + SPARE 1" CONDUIT PER DETAIL 2E10.1.
46. 2#10 + 1#10 GND IN 1" CONDUIT PER DETAIL 1E10.1 TO ALL LIT BOLLARDS SHOWN ON THE ARCHITECTURAL PLAN.
47. 4#6 (LIGHTING) + 2#6 (ENCLOSURE POWER) + 1#6 GND IN 1-1/2" CONDUIT PER DETAIL 1E10.1.
48. 4#6 (LIGHTING) + 2#6 (ENCLOSURE POWER) + 1#6 GND IN 1-1/2" CONDUIT PER DETAIL 1E10.1.

RICHARD L. SHRYVE
DEED: 2004-9866
UPI: 19-2333220-405444

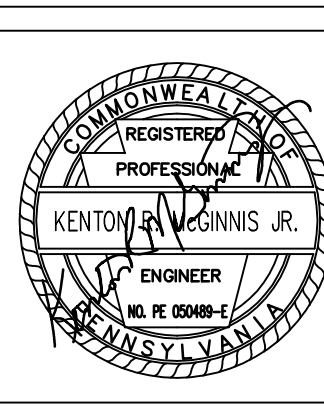
NORTHERN LEBANON SCHOOL DISTRICT
DEED: 1306-1144
UPI: 19-2332321-404932
AREA: 2,168,317 S.F.; 49.778 ACRES (GROSS)
2,107,820 S.F.; 48.389 ACRES (NET)

1 SITE PLAN - ELECTRICAL
1" = 50'-0"

NO.	DATE	BY	DESCRIPTION OF CHANGES
1	09-20-21	ACRONIM/AM	
2	07-07-21	ACRONIM/AM	
3	12-29-21	RFI #8: REVISION	

MOORE
ENGINEERING

3637 Columbia Avenue
Lancaster PA 17603
P: 717.285.3141
mooreengineering.com



CRABTREE ROHRBAUGH & ASSOCIATES - ARCHITECTS

401 EAST WINDING HILL ROAD
MECHANICSBURG PA 17055
717-458-0272 FAX 717-458-0047

TOWSON, MARYLAND
CHARLOTTESVILLE, VIRGINIA
WHITE SULPHUR SPRINGS, WEST VIRGINIA

www.cra-architects.com

PROPOSED NEW
NORTHERN LEBANON ELEMENTARY SCHOOL
NORTHERN LEBANON SCHOOL DISTRICT
SCHOOL DRIVE & AIRPORT ROAD
BETHEL TOWNSHIP, LEBANON COUNTY, PENNSYLVANIA

SITE PLAN - ELECTRICAL

PROJECT 3446

DATE: JUNE 1, 2021

PROJECT 3446

E1.1